



SAI COND

SALES & ENGINEERING SDN. BHD.

PORTABLE & REFRIGERATED TRUCKS



Specialist in refrigerated coldbox with independent rechargeable "Euthetics - Polypropylene Glycol" coldplates
Themendous costs saving on energy consumption and truck repair maintenance

Extended operations for more deliveries with very reliable holding temperature

Rugged coldbox built for use on rough terrain and roads

SPECIFICATIONS

TRUCK BODY & CONTAINER

| | |
|--|--|
| Proposed Vehicles | Daihatsu, Isuzu, Nissan, Hino, Toyota, Mitsubishi, Hicom etc |
| (Standard Truck) External Dimension | 3047mm(L) x 1800mm(W) x 1700mm(Ht) 4267mm(L) x 2100mm(W) x 2000mm(Ht) 4867mm(L) x 2100mm(W) x 2000mm(Ht) |
| Capacity | 7,680 to 22,400 liters / 7.68 to 22.4 Meters / 271 to 79 cu.ft. |
| Exterior Surface Finish | Glass Reinforced Polyester (GRP) Pre-Coated Steel (HDG) |
| Interior Surface Finish | Pre-coated Steel (HDG), Aluminium Plate, Stainless Steel Sheet |
| Floor Deck Finish | Pre-coated Steel (HDG), Aluminium Chequered Plate Aluminium Corrugated Deck, Stainless Steel Plate |
| Insulation Materials | Thickness 75mm, 100mm or 150mm Polyurethane Foam (Non-CFCs) Density : Kg/M ³ 44 ± ² K Value/Thermal Conductivity : Kcl/mhoc 0.0165 |
| Door Openings | Double swing door at rear and 1 no. swing door at one side. (Other combinations for door openings available upon request) |
| Standard Fittings | Interior weatherproof lighting, PVC strip curtains and mudguard |

EUTECTIC COLDPLATE SYSTEM

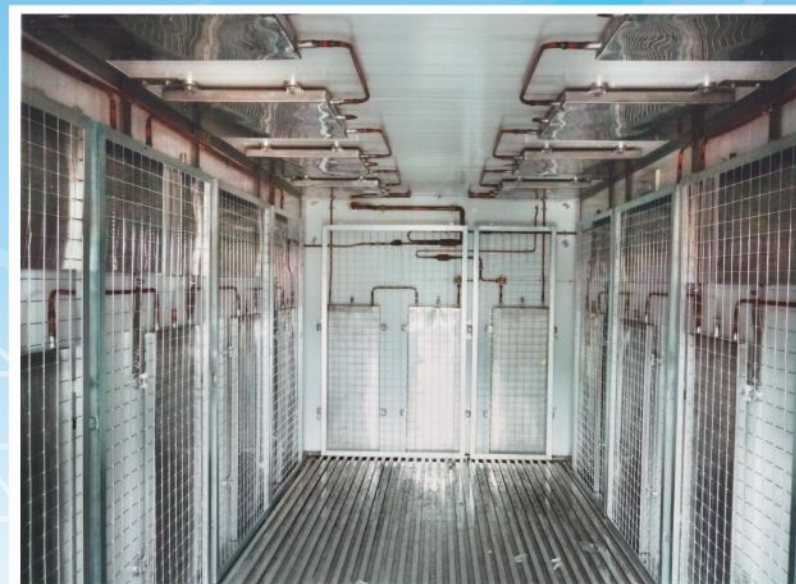
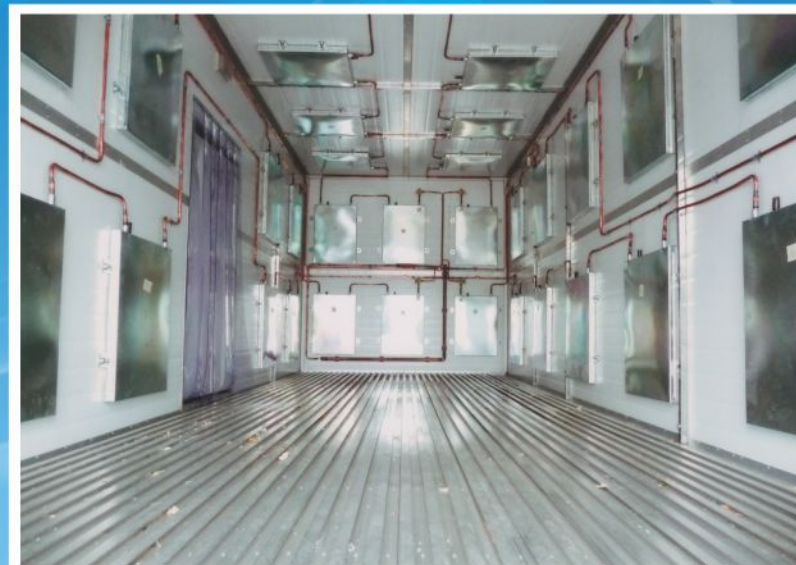
| | |
|-------------------|---------------------------------------|
| Evaporator System | Propylene Glycol Euthetics Coldplates |
| Condensing Unit | Sai Cond System |
| Refrigerant | R22, R134a or R507 |
| Defrosting | Manual power off |
| Power Supply | 415V-3Ph/50Hz or 220/240v-1Ph/50Hz |

AIR BLOWER SYSTEM

| | |
|-------------------|--|
| Evaporator System | Fin Coil with Forced Air Blower cooling system |
| Condensing Unit | Mitsubishi, Thermo King, Sai Cond System etc |
| Refrigerant | R22, R134a |
| Defrosting | Auto-thermostatic cut in/out or Manual power off |
| Power Supply | Power-take-off |
| Standby Power** | Alternate Elect. System : 415V-3Ph/50Hz or 220/240V-1Ph/50Hz |

** Optional upon request

EUTECTIC COLDPLATE SYSTEM



SALES & ENGINEERING SDN. BHD. (Company No. : 455716-V)



CERTIFICATION NO.: 6981

No. 3, Jalan Mashuri 1, Kawasan Perindustrian Kluang, Batu 4, Jalan Mersing, 86007 Kluang, Johor, Malaysia.

Tel : 607-787 9588, 787 8860 Fax : 607-787 8871

Email : inquiries@saicond.com.my / sales@saicond.com.my Website: <http://www.saicond.com.my>